

Shotcrete (spider) plates

Category: Plates & washers

Shotcrete (Spider) Plates

Shotcrete anchor plates are constructed specifically for use with rock bolts and shotcrete. Reinforcing bar is custom bent and welded to conventional rock bolt anchor plates.

Plates are 5" x 5" x 1/4", 6" x 6" x 1/4" or 3/8". Hole size can be from 7/8" to 1 1/2". Rise on spider can be made to any height required for depth of shotcrete.

Advantages

- Fast and easy to use.
- Greatly improves "punching" shear of shotcrete.
- Provides enlarged bearing area for higher load carrying capacity.

Where to use

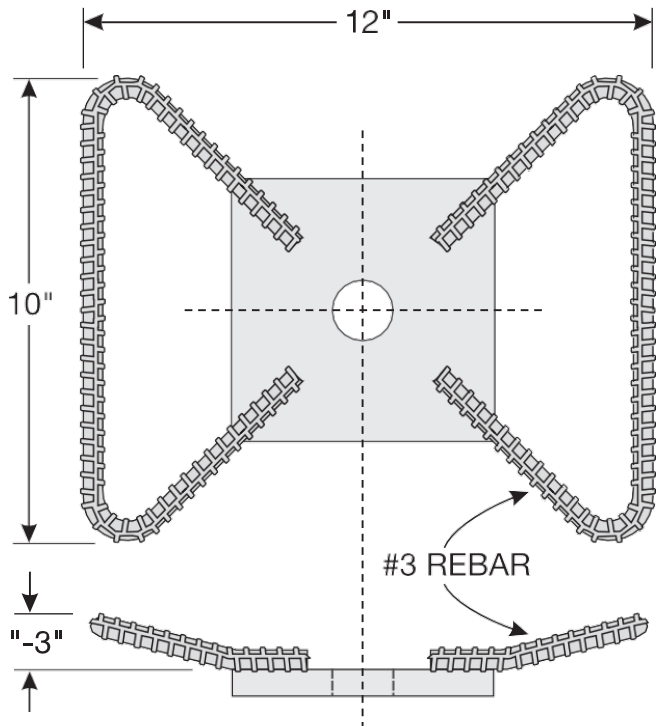
Any areas where bolting precedes shotcreting, especially in poor rock conditions, where improved bearing capacity of the ground support is desirable.

Installation

- Install DSI shotcrete plates in the same manner as conventional plates.
- Apply shotcrete to the rock surfaces and ensure the plates and rebar wings are embedded at least 38 mm (1 1/2").

Materials

Plate material Grade A-36 (36,000 psi) meets or exceeds ASTM F432 deflection criteria. Rebar meets ASTM A-615 and CSA G30.18M specs.



Custom sizes available upon request.

Scan to get our app



iOS



Android